

The model WC5WA12030H abrasive cutting system:

Pump:

High pressure pump type: dual reciprocal intensifier.
Maximum pressure: 380Mpa (55kpsi).
Maximum water flow rate 3.6L/minute (0.8Gal/min)
Pump cooling method: water. *Oil chiller is optional.*
Approximate size: 60" x 32" x 55" (1600x800x1400mm)
Power source: 3 phase, 380VAC, 50Hz, (or 220V 60Hz)
37kw, 50 HP. Motor starting current requirement: 160Amp
Main motor is of Siemens brand. Plunger type oil pump,
Durable electrical shift valve.



CNC Cutting table:

S
tyle: gantry.
Effective cutting area: 3x12m.
Maximum Z-axis travel: 6" (150mm).
X-Y axis motion system: rack-pinion/ball screw, and linear motion guide.
X-Y axis motion drive: AC servo motor,
Z axis DC motor with speed reducer.
Water tank made of stainless steel.
Max Cutting tolerance: 0.3mm/m.
Repeat accuracy +/-0.1mm/m.
Maximum X-Y axis travel speed 10m/min.
Maximum work piece weight: 500kg/m²

Cutting head:

Cutting head has pneumatically operated on/off valve. Compressed air source is necessary. *An air compressor is optional item from manufacturer.* Capable of cutting cut all kinds of metal, marble, granite, glass, ceramic tile, rubber, plastic, virtually any materials. *Optional feature: bevel cutting up to 30 degree with straight lines parallel to X or Y. Dual cutting head is also optional.*

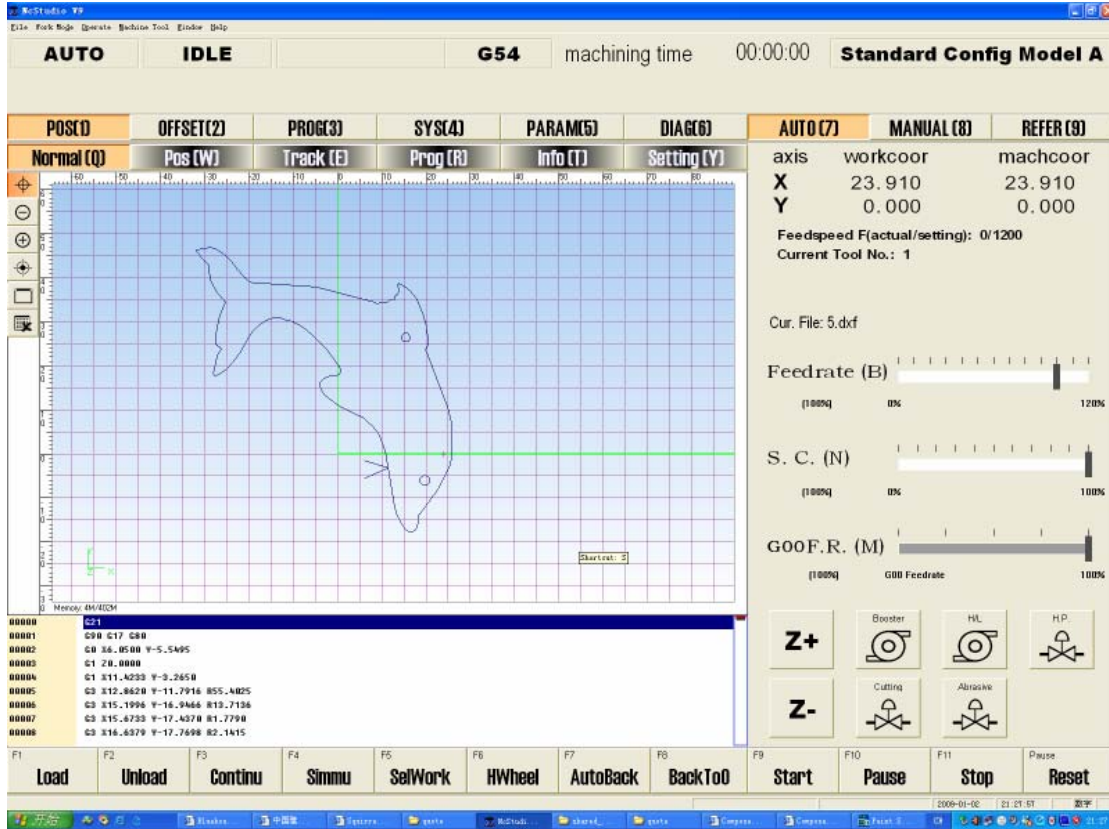


CNC controller:

CNC controller is based on advanced industrial grade PC computer. The controller is capable of X-Y-Z axis interpolation movement. Accelerate or decelerate motion and high speed travel from point to point. Simulation without motion or dry-run with axis movement but no jetting of water/abrasive are features included. Error stop and trace repeat are also very useful features. Other features include out of range warning and hard stop to prevent damage of the cutting head. Emergency shut off switch is provided. CNC system is based on Windows operating system winXp/Vista/Win7 and is very easy to learn and operate. Both metric and imperial (inch) versions are available.

DXF file compatible:

The controller is compatible to dxf file format. Users can save design drawing as .dxf from AutoCAD and read the file into the controller. Controller will post the dxf file to G-code. The controller can also read G-code generated from other CAM software.



User Interface of Controller

Advanced CAD/CAM software (optional):

We offer optional CAD/CAM software for design drawing, automatically generating machine path, lead in/out, nesting, tool offset, and posting G code. This software has two parts, one is similar to AutoCAD (computer aid design), and the other is with rich features of CAM (computer aid machining). This software can also read dxf file generated from other software.

Automatic abrasive feeder:

- Requires 70psi pneumatic source
- Capacity 40 Gallon.
- Self detecting empty/full status of reservoir and start/stop feeding.
- Model number ADS-04-170.



Accessories included in standard package :

High pressure tubing, Water hoses, Electrical cable, 1 pcs nozzle, pcs orifice, 1 tube of Blue Goop.
1 set of special tools for pump maintenance.

Spare parts kit (optional):

Including 10 nozzle, 20 ruby orifice, 1 HP cylinders, 1 check valve body, 2 check valve repair kits, 5 on/off valve repair kits, 4 HP seal sets, and 4 LP seal kit.